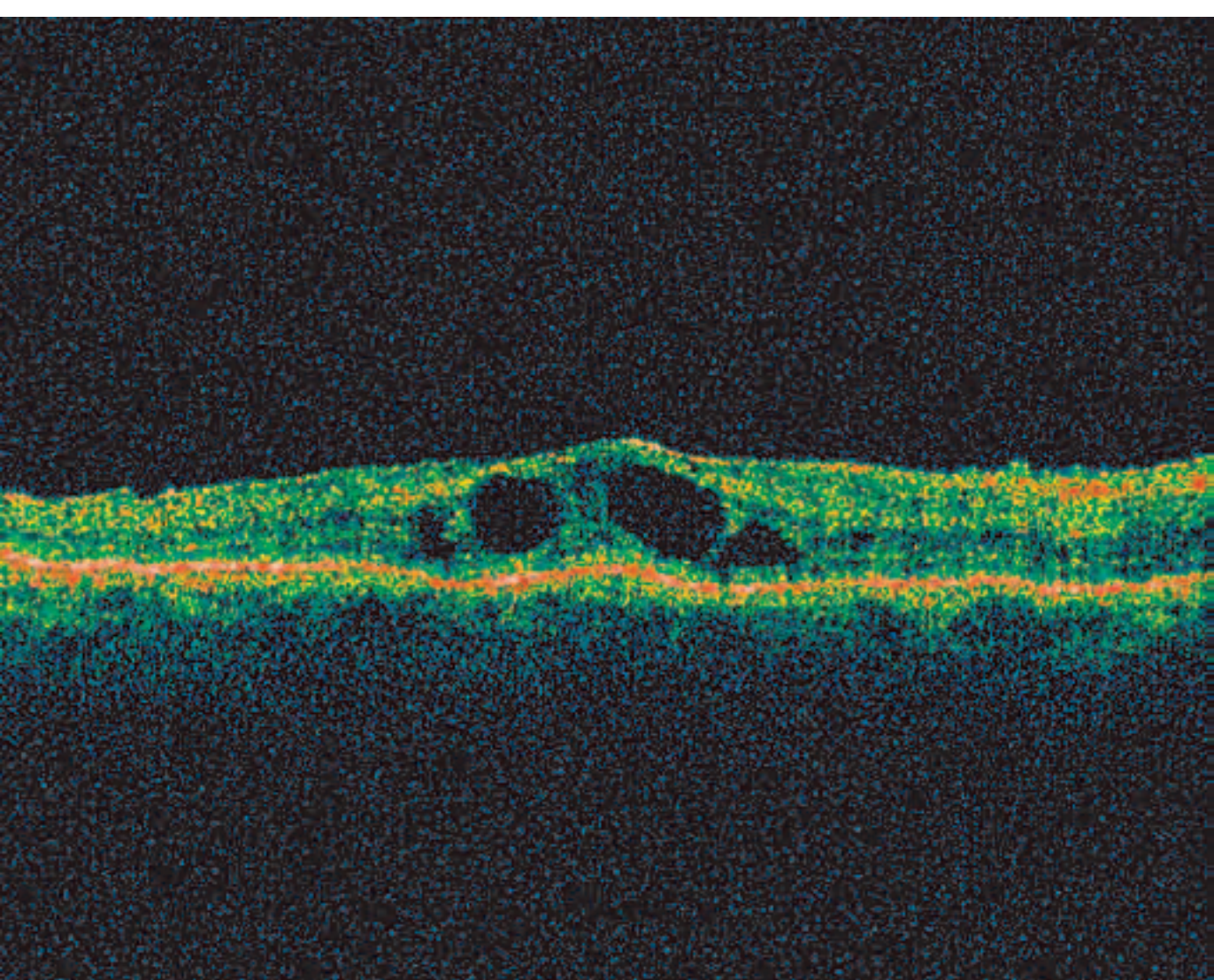
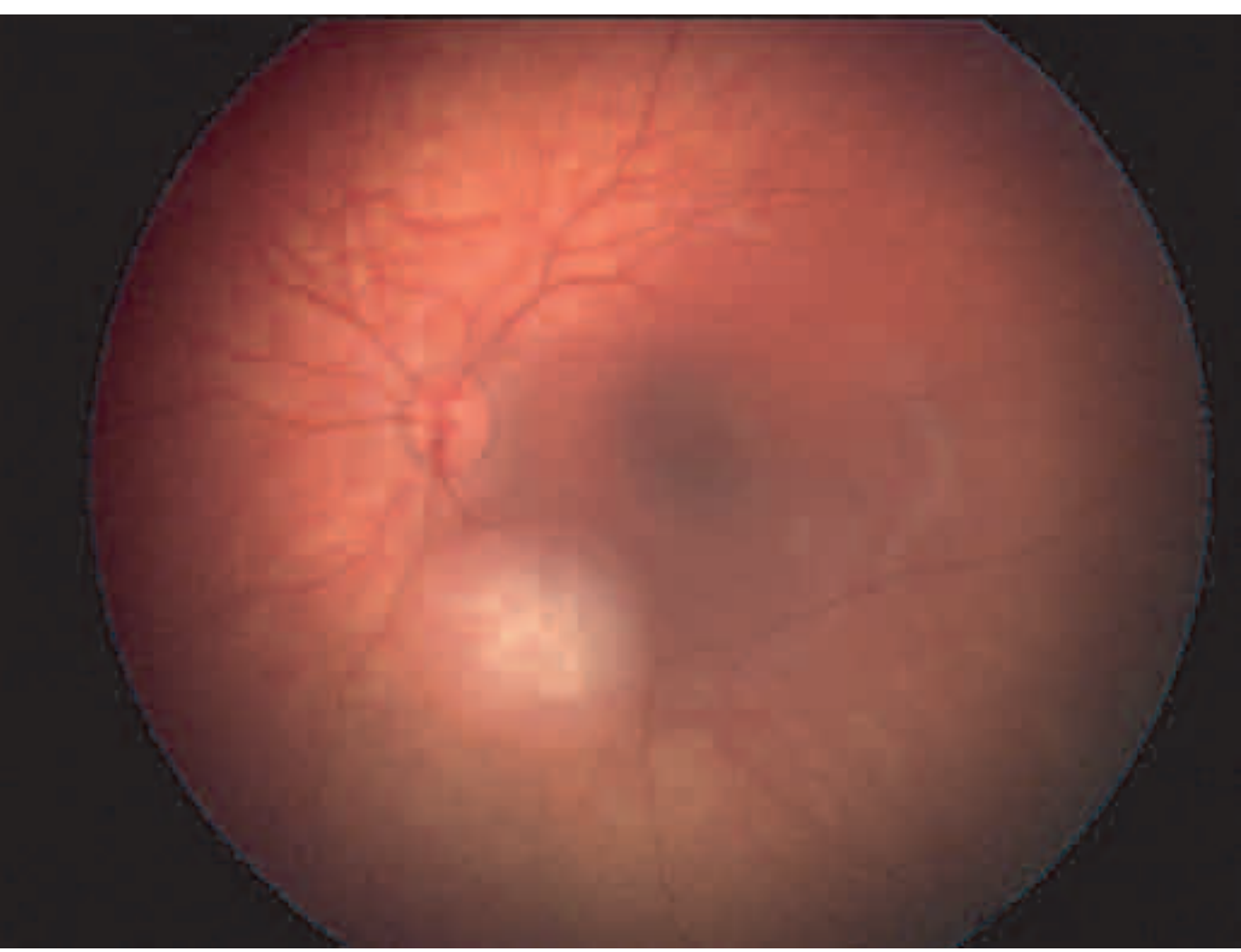


Ophthalmic Imaging Unit

The Ophthalmic Imaging Unit (OIU) provides specialized imaging of all structures of the eye to help in diagnosis and to provide a pictorial record over time of any changes in the course of an eye disorder.



The Ophthalmic Imaging Unit provides specialized imaging of the eye to help in diagnosis and plays a role in furthering research

State of the art digital technology improves how well we can see the eye and understand how it works. Colour images of the fundus (the retina, light sensitive layer inside the eye), fluorescein angiography (looks at the blood vessels inside the eye), slit lamp biomicroscopy (looks at the cornea, iris and lens), ophthalmic ultrasound and Optical Coherence Tomography or OCT (cross-sectional views of the different layers of the retina and optic nerve) are some of the services provided daily by the OIU.

The Ophthalmic Imaging Unit plays an important role in research studies and clinical teaching. Over the past decade the OIU has produced high quality, award-winning ophthalmic images that have been presented/published nationally and internationally.